



Excellent  
Line



**NEXO**

Alpha  
Line for NEXO

A close-up photograph of a black speaker grille with a hexagonal mesh pattern. The word "NEXO" is prominently displayed in the center in a white, bold, sans-serif font. Below the grille, three black rectangular components, likely tweeters or drivers, are visible on a dark surface.

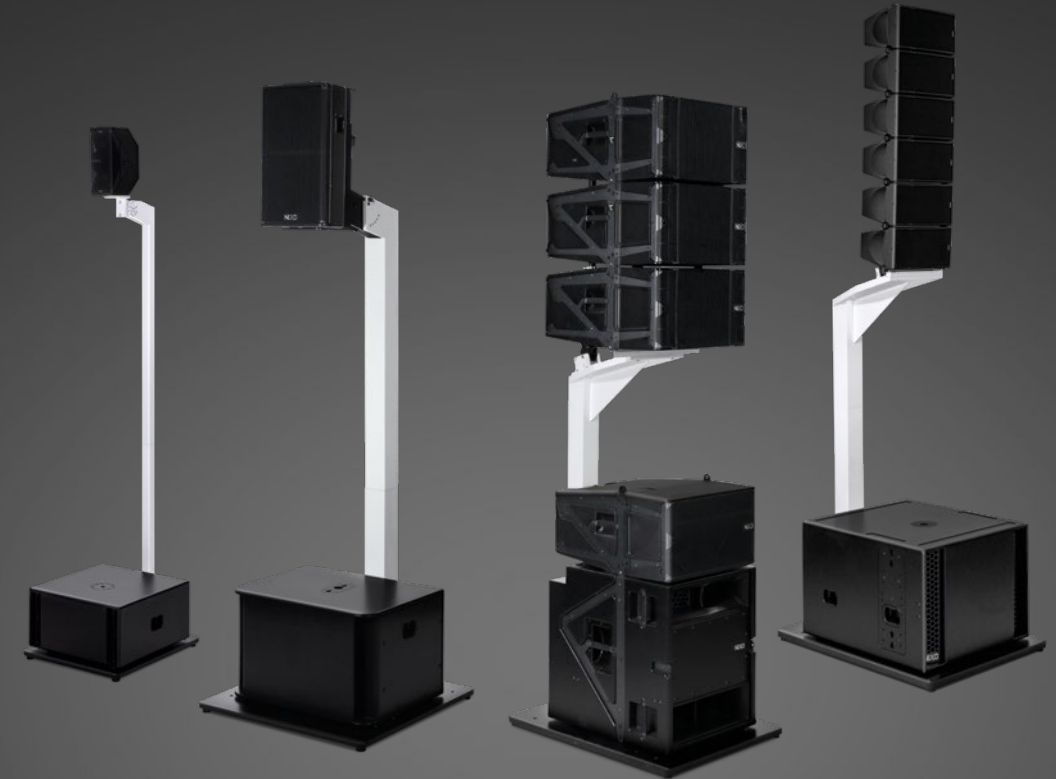
NEXO

# Functional Specialized

The Excellent Line offers the perfect balance between purist design and functional technology for first-class atmosphere.

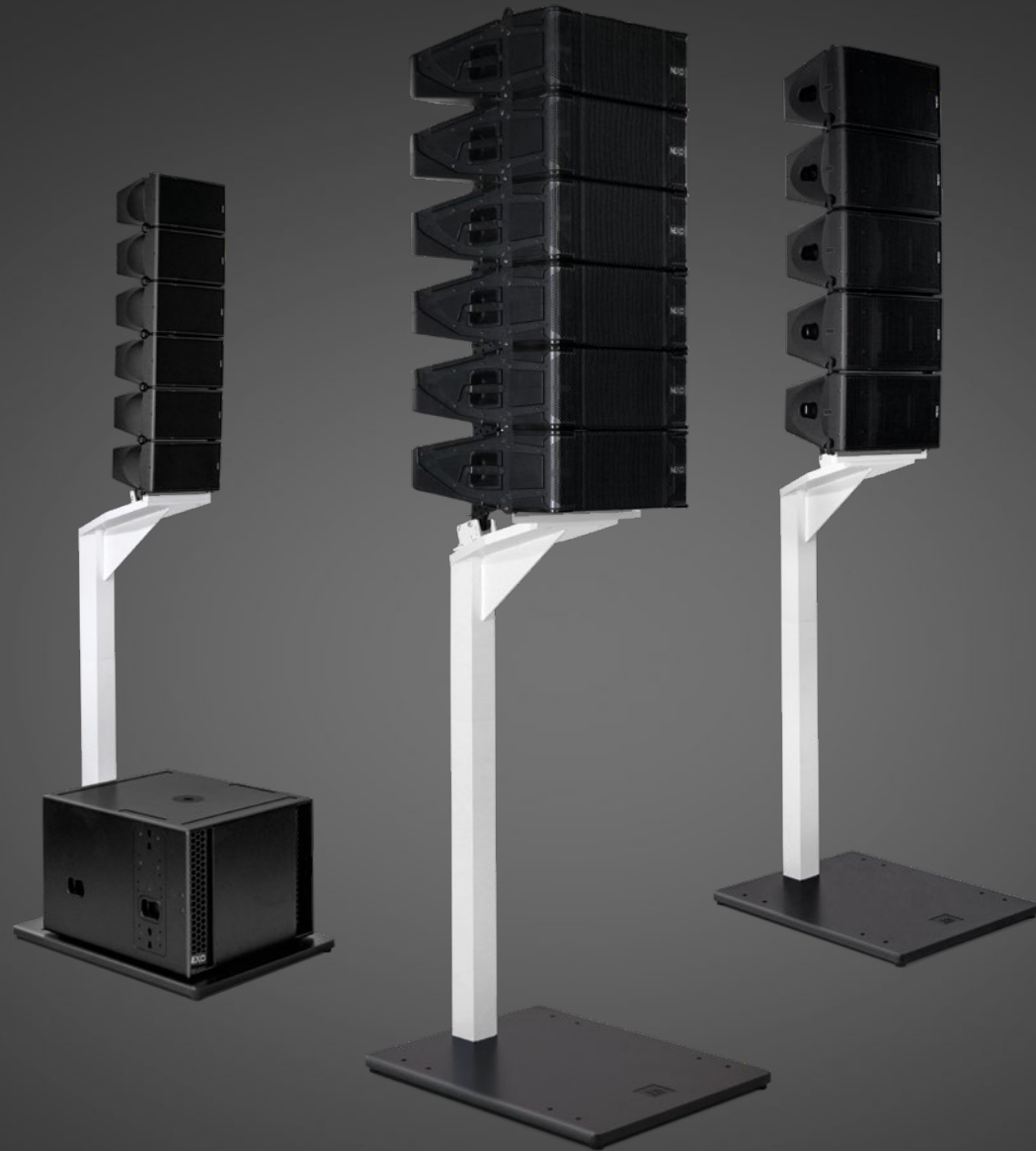
The new Excellent Line Alpha was specially developed for the high-end entertainment sector, making it the perfect complement to NEXO loudspeakers.

Alpha Line for NEXO  
can accommodate the  
complete NEXO loudspeaker  
range, from stadium to gala.



## NEXO

The Excellent Line Alpha for NEXO is a flexible DesignStand solution for all NEXO full-range and subwoofer cabinets. Especially in small to mid-sized event locations, the Excellent Line Alpha for NEXO performs to perfection. The combination of the discreet DesignStand with one of the most powerful PA systems on the market offers new solutions for high-class event locations. The audience can focus on the subject of the event and is not disturbed by massive ground stacks or tower lifts. Moreover the sound performance meets the highest demands.



Alpha Line for NEXO STM/M Series  
changes the look of a ground stack.  
No subwoofers are needed to raise full-range  
cabinets to their working height.

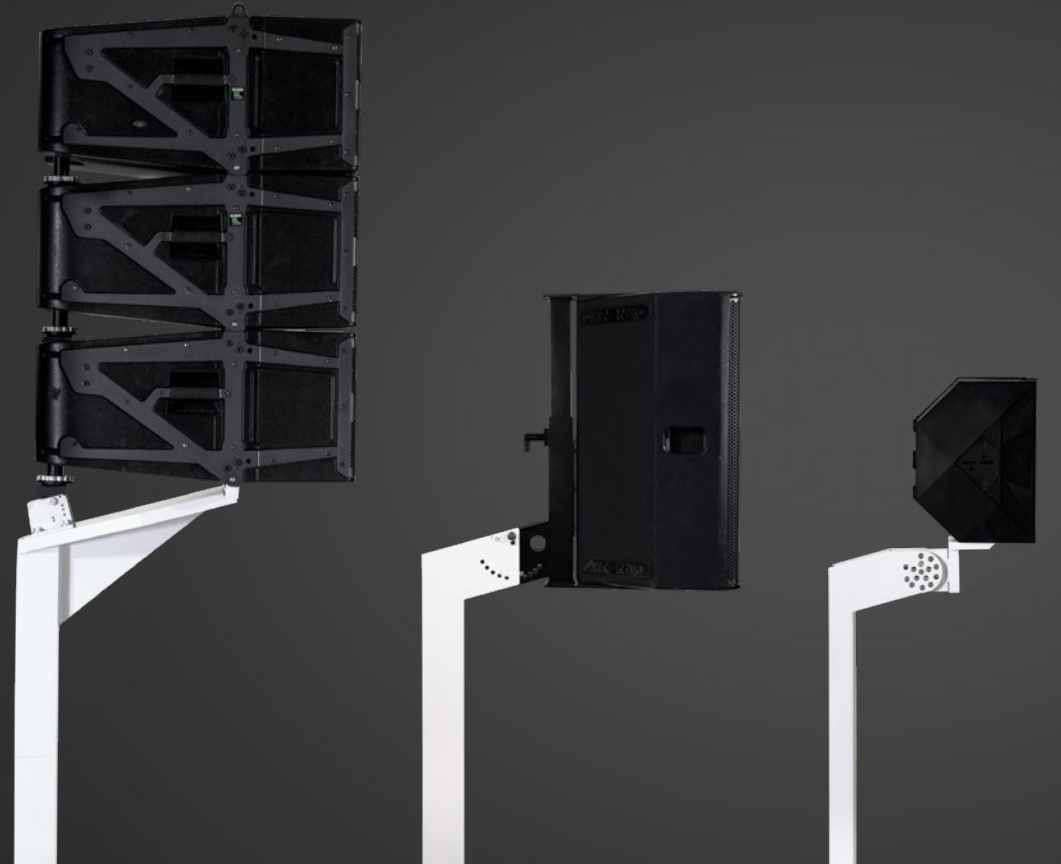
The selected subwoofer does not need rigging  
compatibility to the full-range modules.



Three different Baseplates  
accommodate the complete NEXO range  
of subwoofers and can be combined  
individually with different tops.

With holes for permanent installation.

The Adapter Heads  
are specialized on the  
NEXO Series STM/M, PS and ID.



# DesignStand Alpha for NEXO



**Applications**  
indoor stand for  
NEXO loudspeakers



**Height Options**  
*STM/M Series*  
min. 150 cm  
max. 270 cm  
*PS Series*  
min. 170 cm  
max. 290 cm  
*ID Series*  
min. 180 cm  
max. 300 cm



**Adapter Heads**  
adapter heads  
for NEXO Series  
STM/M, PS, ID



**Capacity**  
max. recommended  
load 240 kg



**Baseplates**  
BP1000, BP800  
and BP650 with  
decentralized mount

## Components for NEXO



### Adapter Heads

NEXO STM/M adapter head | 17 kg  
NEXO PS adapter head | 13 kg  
NEXO ID adapter head | 4.4 kg

### Extensions

*10 x 10 cm quadratic pipes*  
100 cm | 6.4 kg  
80 cm | 5.4 kg  
60 cm | 4.4 kg  
*5 x 5 cm quadratic pipes  
(NEXO ID only)*  
100 cm | 2.3 kg  
80 cm | 2 kg  
60 cm | 1.6 kg

### Baseplates

BP1000 | 61 kg  
BP800 | 35 kg  
BP650 | 20 kg

With the three baseplates, every NEXO full-range cabinet can be used without subwoofer—neither the weight of the subwoofer is necessary nor the subwoofer itself as a stand.

The three baseplates are matched to three sizes of subwoofer lines. The baseplate BP1000 is designed for heavy subwoofers such as S118 and MSUB15. This baseplate is the choice for STM M46, M28, M10 and M6 line arrays. BP1000 also fits with the PS adapter head.

The BP800 works with LS600 and LS400 in combination with the PS family or M6 line array.

The BP650 is for the ID family and can accommodate a slim 50x50mm column pipe, which matches with the ID Series. The baseplate BP650 accommodates the subwoofers ID S110, ID S210 (upright) and LS400. All baseplates can be attached through holes on sub-structures.

## Baseplate BP1000

for NEXO STM/M and PS Series

**Color:** RAL 9005



## Baseplate BP800

for NEXO PS Series

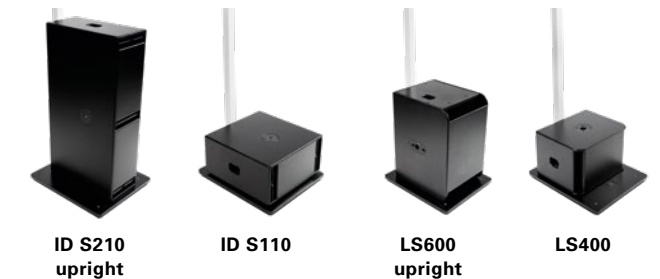
**Color:** RAL 9005



## Baseplate BP650

for NEXO ID Series

**Color:** RAL 9005



The NEXO full-range cabinets are divided into three groups. The STM/M Group consists of STM46, STM28, M10 and M6. The STM/M adapter head works with a 10x10cm quadratic column and has changeable mounting bars for the different cabinets.

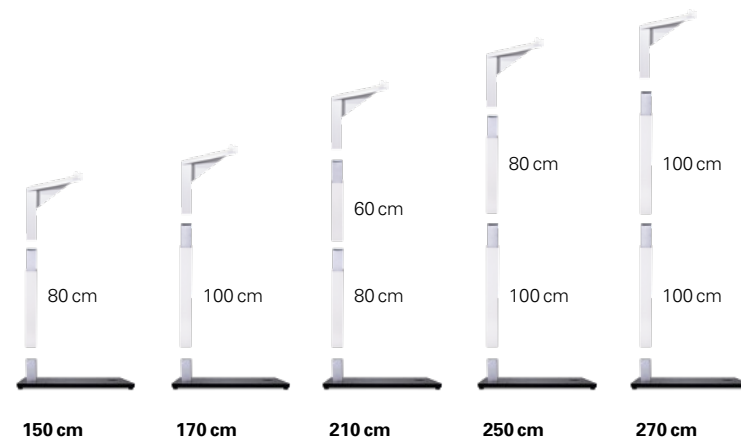
The PS Series includes PS8, PS10, PS15 and one S12 vertical. The PS adapter head also has a 10x10cm quadratic column.

The ID Series got a new 5x5cm quadratic column with an innovative rotating mechanism. As the ID Series is the slimmest cabinet (13 cm), the combination with the 5x5cm column looks well balanced.

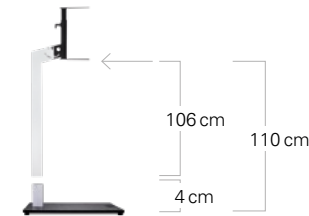
## Height Options for NEXO STM/M Series



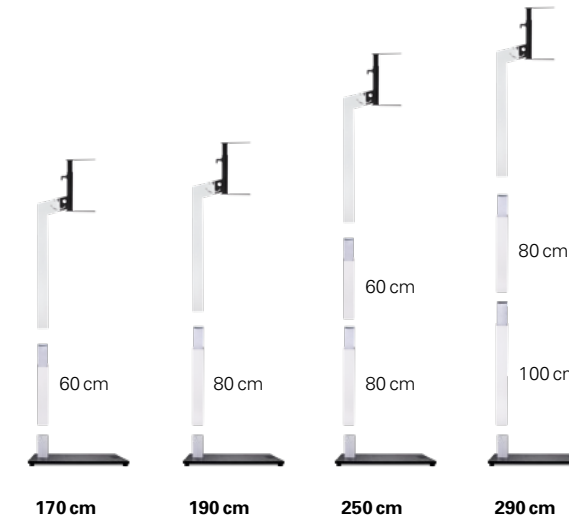
**Baseplate and Mount**  
for NEXO STM/M Series



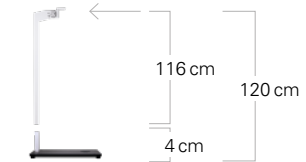
## Height Options for NEXO PS Series



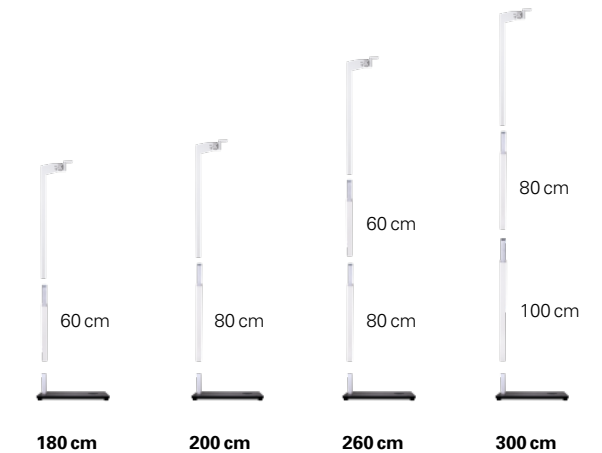
**Baseplate and Mount**  
for NEXO PS Series



## Height Options for NEXO ID Series



**Baseplate and Mount**  
for NEXO ID Series





# NEXO STM/M Series

## Compatibility



**Baseplate**

The NEXO STM/M adapter head is combined with the baseplate BP1000.



**Top**  
M6

**Top**  
M10

**Top**  
STM28

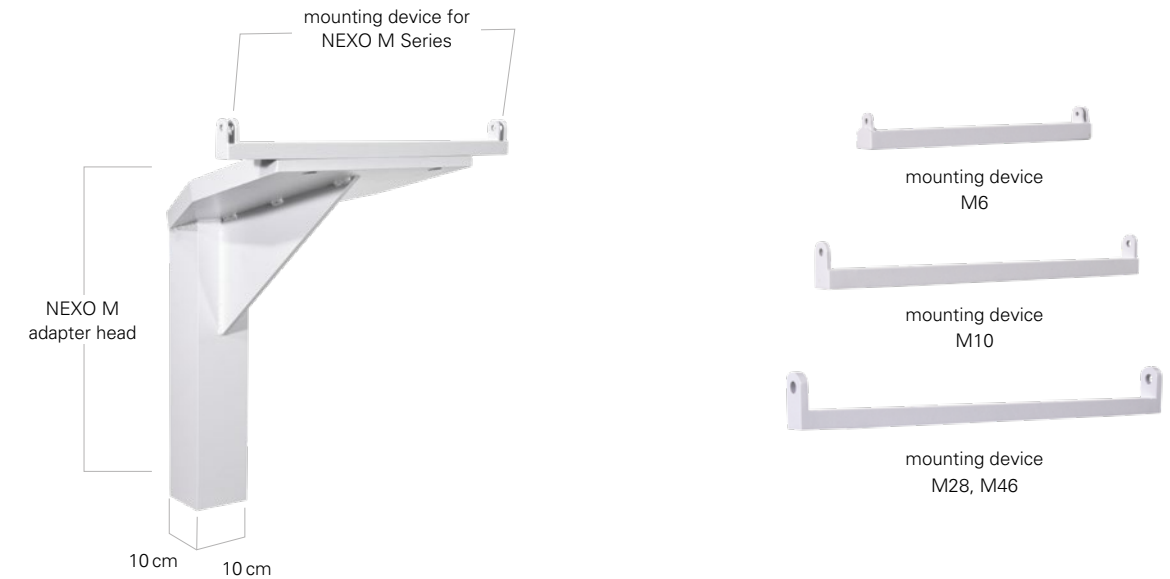
**Top**  
STM46

**All STM/M tops work with BP1000 and can be combined with any suitable bass.**

# Adapter Head

## for NEXO STM/M Series

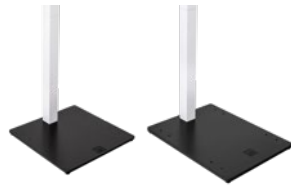
**Color:** RAL 7035



The STM/M adapter head has changeable bars for the different line arrays. The maximum load is 240kg, which is the weight of four M46 cabinets. The overall height of the ground stack is 4m. The first cabinet can be tilted in negative and positive directions.

## NEXO PS Series

### Compatibility



#### Baseplate

The NEXO PS adapter head can be combined with the baseplate BP800 or BP1000.



**Top**  
PS8

**Top**  
PS10

**Top**  
PS15

**Top**  
S12

**All PS tops can be combined with BP800 or BP1000.**

## Adapter Head

### for NEXO PS Series

**Color:** RAL 7035



The PS adapter head accommodates PS8, PS10, PS15 and one S12 vertical. The PS clamp is attached to the back of the loudspeakers and therefore is barely visible to the audience. The clamp can rotate in positive and negative directions. The speaker cables run inside the column.

## Frontfill

### NEXO ID 24



In very tight spaces, positioning a small fill cabinet can be a challenging task. The PS clamp is prepared to accommodate an IDT-QRA and ID24. The ID24 can rotate 180 degrees and can be tilted vertically. The speaker cable can run inside the PS head.

# NEXO ID Series

## Compatibility



**Baseplate**

The NEXO ID adapter head can be combined with the baseplate BP650.



**Top**

ID24

**Subwoofer**

ID S210 upright, ID S110, LS600 upright, LS400

# Adapter Head

for NEXO ID Series

**Color:** RAL 7035



5 cm 5 cm

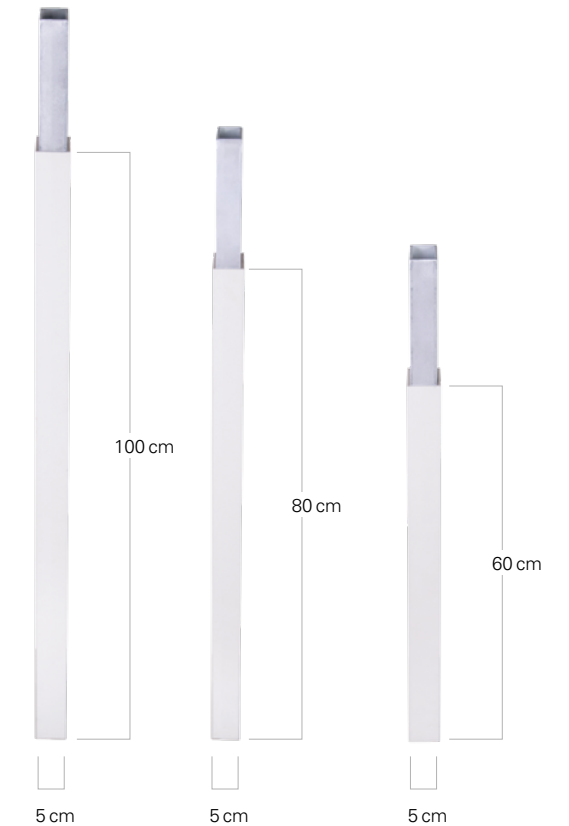
tiltable in 2° steps

The ID adapter head with its 5 x 5 cm quadratic column is slimmer than the STM/M or PS adapter head to ensure good proportions. NL4 speaker cables can still be run inside the quadratic column. The ID speaker is tiltable in positive and negative directions. After adjusting the angle, the rotating mechanism is hidden by a cover. The ID24 cabinet is fixed with an M10 screw to the rotating mechanism.

# Extensions

for NEXO ID Series

**Color:** RAL 7035



5 cm

5 cm

5 cm

100 cm

80 cm

60 cm

Let us advise you on the capabilities of  
Excellent Line Alpha:  
+49 (0) 54 52–97 33 10

The components of Excellent Line Alpha are manufactured  
and distributed in Germany.

**H OF  
ALUTEC**

H.O.F. ALUTEC Metallverarbeitungs GmbH & Co. KG  
Brookstrasse 8  
D-49497 Mettingen

T +49 (0) 54 52–97 33 10  
F +49 (0) 54 52–97 33 19

[sales@h-of.de](mailto:sales@h-of.de)

All technical details and images correspond to the current state of the product line; technical improvements may follow without notification. Printed in January 2018.

The Excellent Line is a developing brand,  
so we welcome your feedback:  
[vision@excellent-line.com](mailto:vision@excellent-line.com)

