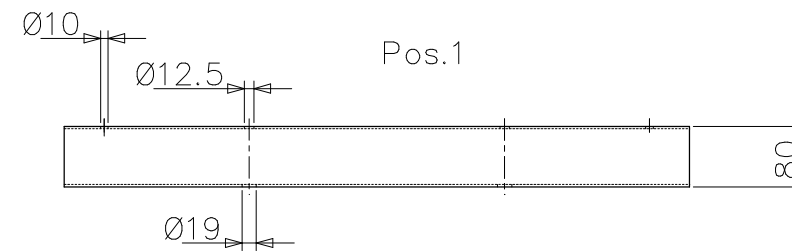


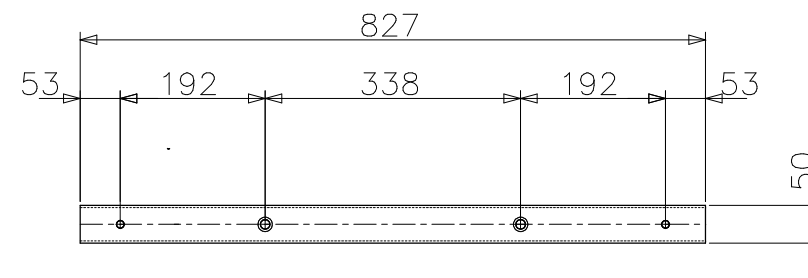
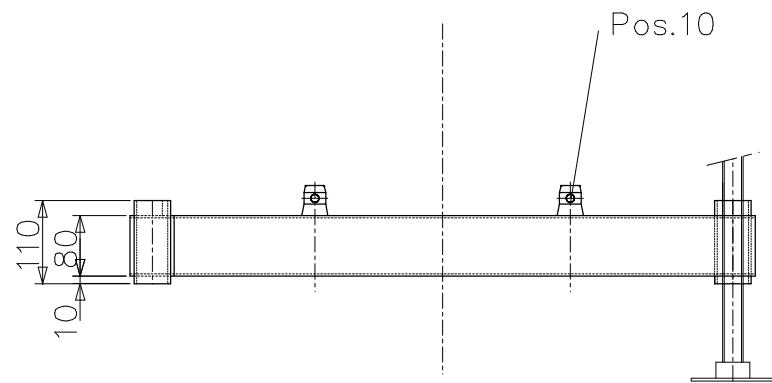
A B C D E F G H

1

1



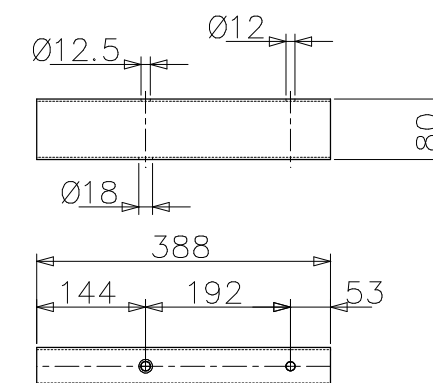
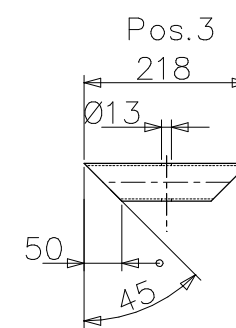
Schnitt A-A



2

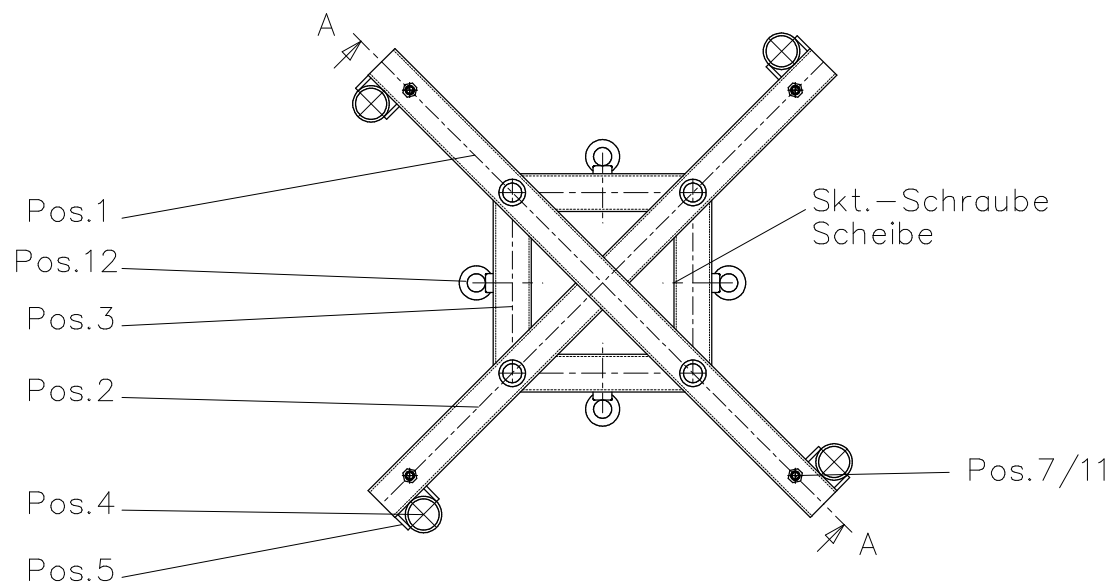
2

Pos.2



3

3



Basement
Art.-Nr.112 290 5SBL

Steelbase light
ohne Spindelfuß

- Pos.1 RR 80x50x3x827mm 1Stk.
- Pos.2 RR 80x50x3x388mm 2Stk.
- Pos.3 RR 80x50x3x218mm 4Stk.
- Pos.4 RD 48,3x3,6x110mm 4Stk.
- Pos.5 FI 80x5x25mm 8Stk.
- Pos.6
- Pos.7 Skt.-Mutter M12 DIN934 4Stk.
- Pos.8 (Fußspindel 4Stk.)
- Pos.10 Aufschraubkoni 4Stk.
- Pos.11 Rastbolzen M12 mit Zugring GN717-8-A 4Stk.
- Pos.12 Ringmutter M12 4Stk.
- Skt.-Schraube M12x70 DIN 931 4Stk.
- Scheibe 13 DIN125 4Stk.

Material: S235

5

5

A B C D E F G H